

**GSN Antibody (monoclonal) (M01)****Mouse monoclonal antibody raised against a partial recombinant GSN.****Catalog # AT2272a****Specification**

---

**GSN Antibody (monoclonal) (M01) - Product Information**

Application	WB, IHC, IP, E
Primary Accession	<a href="#">P06396</a>
Other Accession	<a href="#">BC026033</a>
Reactivity	Human
Host	mouse
Clonality	Monoclonal
Isotype	IgG1 Kappa
Calculated MW	85698

**GSN Antibody (monoclonal) (M01) - Additional Information****Gene ID** 2934**Other Names**

Gelsolin, AGEL, Actin-depolymerizing factor, ADF, Brevin, GSN

**Target/Specificity**

GSN (AAH26033, 673 a.a. ~ 782 a.a) partial recombinant protein with GST tag. MW of the GST tag alone is 26 KDa.

**Dilution**

WB~~1:500~1000

IHC~~1:100~500

IP~~N/A

E~~N/A

**Format**

Clear, colorless solution in phosphate buffered saline, pH 7.2 .

**Storage**

Store at -20°C or lower. Aliquot to avoid repeated freezing and thawing.

**Precautions**

GSN Antibody (monoclonal) (M01) is for research use only and not for use in diagnostic or therapeutic procedures.

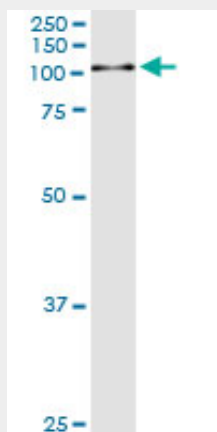
**GSN Antibody (monoclonal) (M01) - Protocols**

Provided below are standard protocols that you may find useful for product applications.

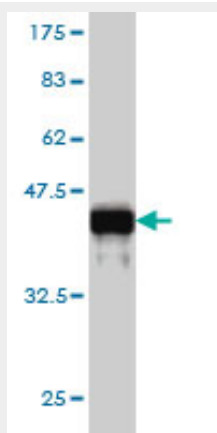
- [Western Blot](#)

- [Blocking Peptides](#)
- [Dot Blot](#)
- [Immunohistochemistry](#)
- [Immunofluorescence](#)
- [Immunoprecipitation](#)
- [Flow Cytometry](#)
- [Cell Culture](#)

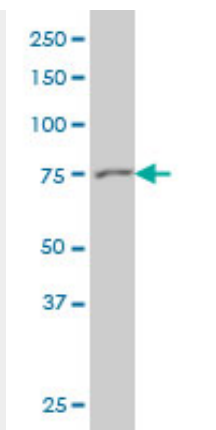
#### **GSN Antibody (monoclonal) (M01) - Images**



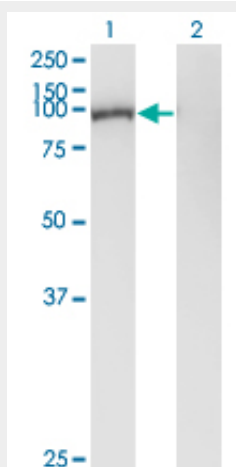
Immunoprecipitation of GSN transfected lysate using anti-GSN monoclonal antibody and Protein A Magnetic Bead ([U0007](#)), and immunoblotted with GSN MaxPab rabbit polyclonal antibody.



Antibody Reactive Against Recombinant Protein. Western Blot detection against Immunogen (37.84 kDa) .



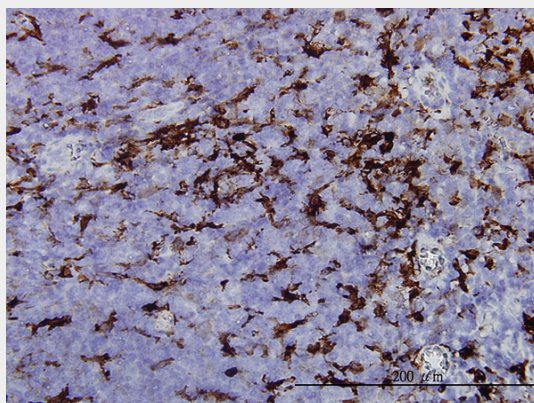
GSN monoclonal antibody (M01), clone 3G5 Western Blot analysis of GSN expression in HeLa (Cat # AT2272a)



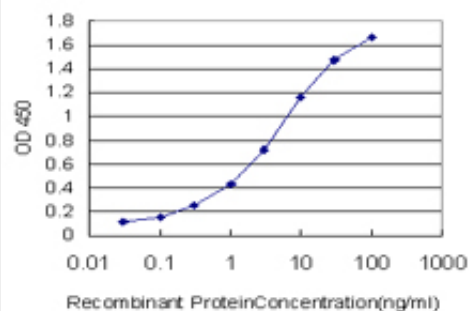
Western Blot analysis of GSN expression in transfected 293T cell line by GSN monoclonal antibody (M01), clone 3G5.

Lane 1: GSN transfected lysate(85.7 KDa).

Lane 2: Non-transfected lysate.



Immunoperoxidase of monoclonal antibody to GSN on formalin-fixed paraffin-embedded human tonsil. [antibody concentration 1 ug/ml]



Detection limit for recombinant GST tagged GSN is approximately 0.03ng/ml as a capture antibody.

### **GSN Antibody (monoclonal) (M01) - Background**

The protein encoded by this gene binds to the plus ends of actin monomers and filaments to prevent monomer exchange. The encoded calcium-regulated protein functions in both assembly and disassembly of actin filaments. Defects in this gene are a cause of familial amyloidosis Finnish type (FAF). Multiple transcript variants encoding several different isoforms have been found for this gene.

### **GSN Antibody (monoclonal) (M01) - References**

Personalized smoking cessation: interactions between nicotine dose, dependence and quit-success genotype score. Rose JE, et al. Mol Med, 2010 Jul-Aug. PMID 20379614. The potential role of plasma gelsolin in dialysis-related protein-energy wasting. Lee PS, et al. Blood Purif, 2010. PMID 20093811. Gelsolin in human colon adenocarcinoma cells with different metastatic potential. Litwin M, et al. Acta Biochim Pol, 2009. PMID 19956804. The 8 and 5 kDa fragments of plasma gelsolin form amyloid fibrils by a nucleated polymerization mechanism, while the 68 kDa fragment is not amyloidogenic. Solomon JP, et al. Biochemistry, 2009 Dec 8. PMID 19904968. Proteomics of tumor-specific proteins in cerebrospinal fluid of patients with astrocytoma: usefulness of gelsolin protein. Ohnishi M, et al. Pathol Int, 2009 Nov. PMID 19883430.